



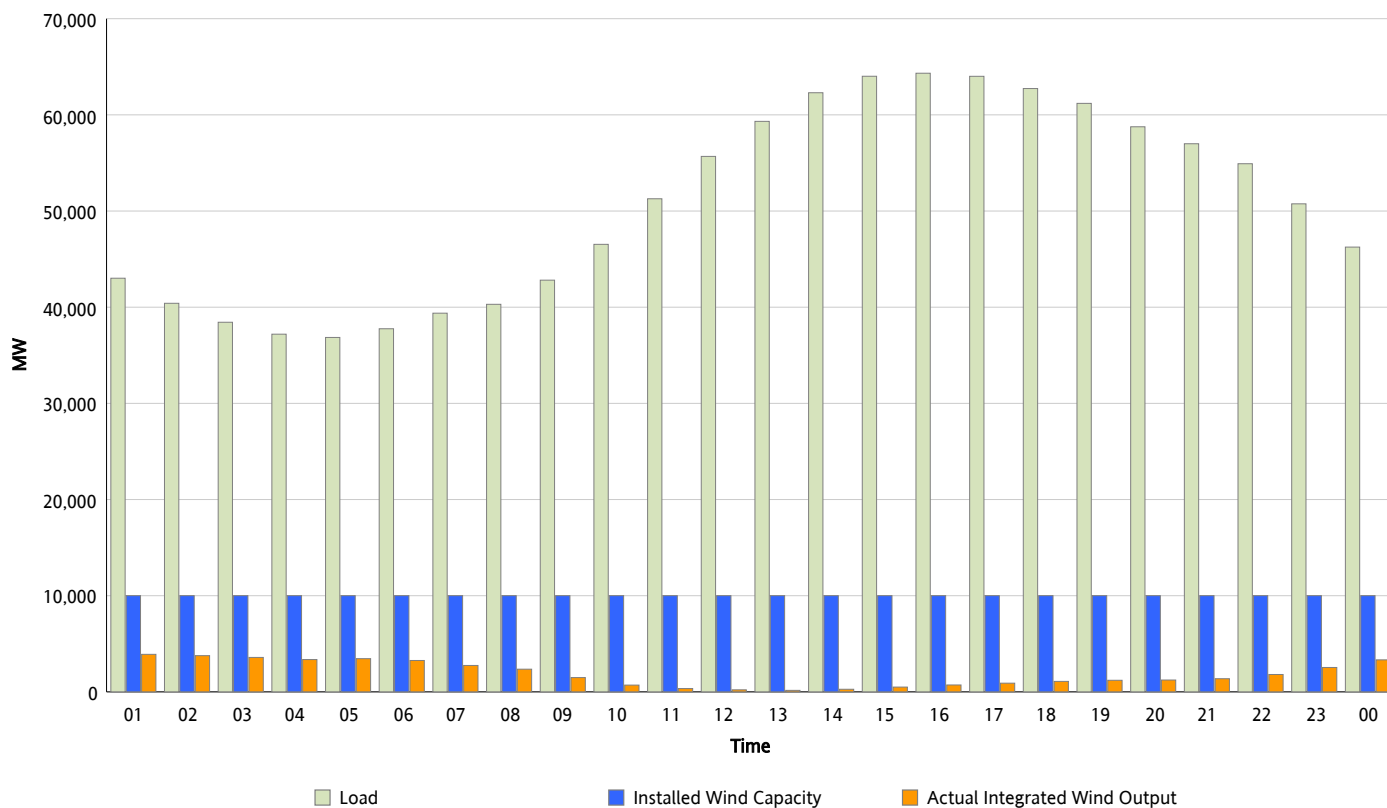
ERCOT Grid Operations

Wind Integration Report : 08/07/2012

Peak Load	64,330 MW
Load Peak Hour (HE)	16
Wind Over Peak	717 MW
Wind Record 06/19/12	8,368 MW
Max Wind Value*	3,971 MW
Wind Peak Time	00:53
Wind Integration %	9.46 %

Hourly Average Actual Load vs. Actual Wind Output

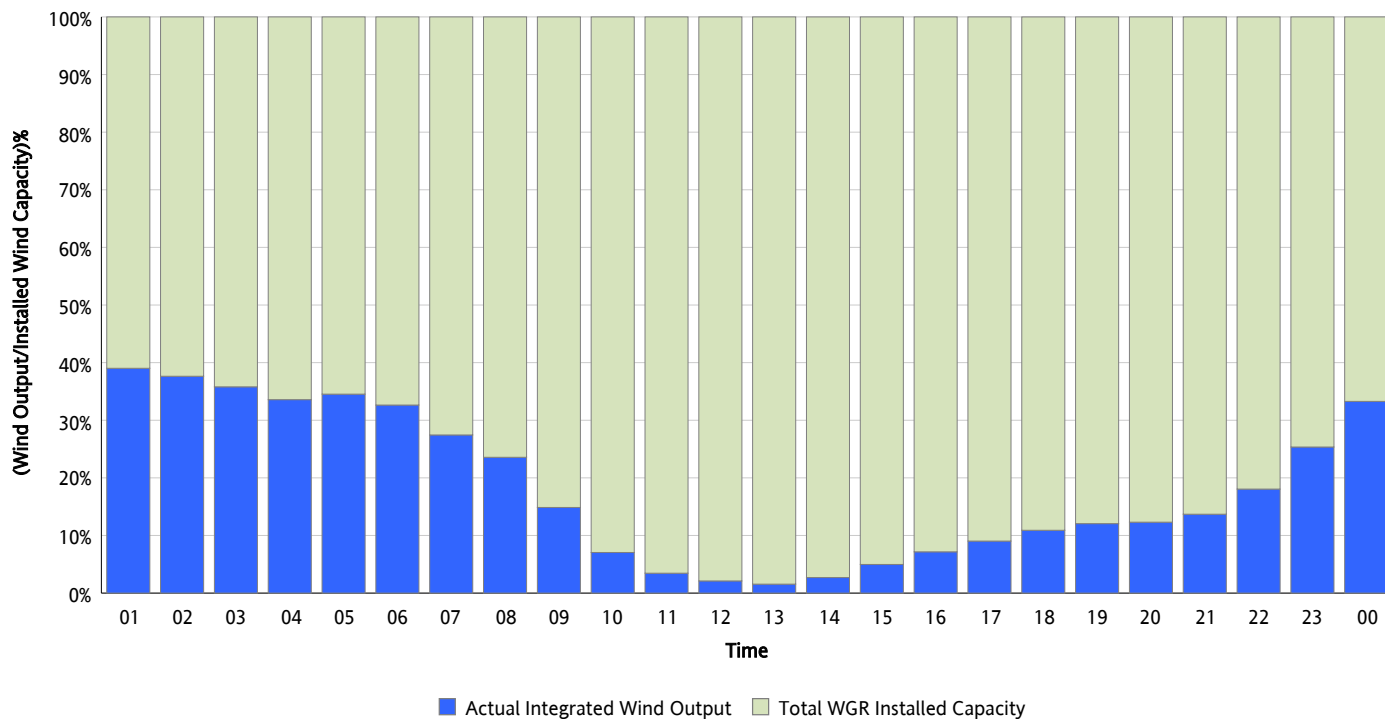
08/07/2012



* Wind Record and Wind Max represent instantaneous values and the rest of the values are integrated over the hour

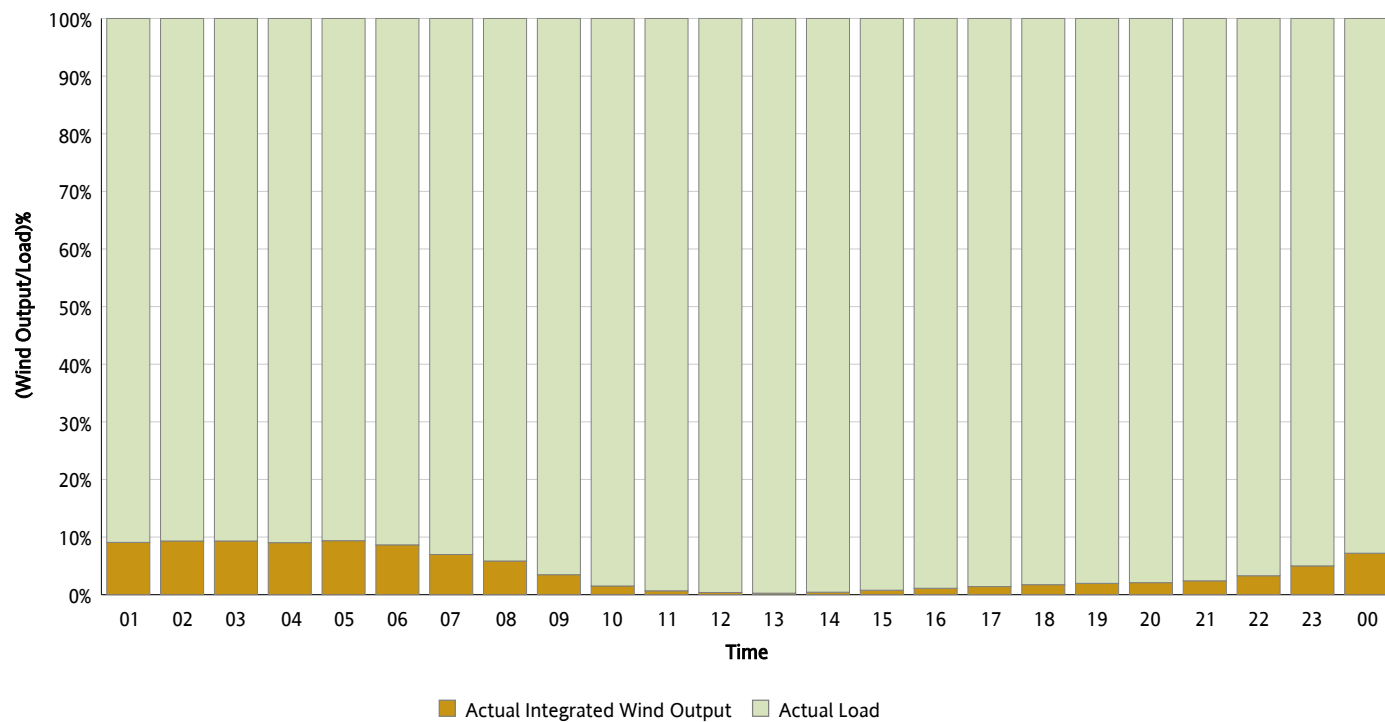
Actual Wind Output as a Percentage of the Total Installed Wind Capacity

08/07/2012



Actual Wind Output as a Percentage of the ERCOT Load

08/07/2012



ERCOT Load vs. Actual Wind Output

07/31/2012 - 08/07/2012

